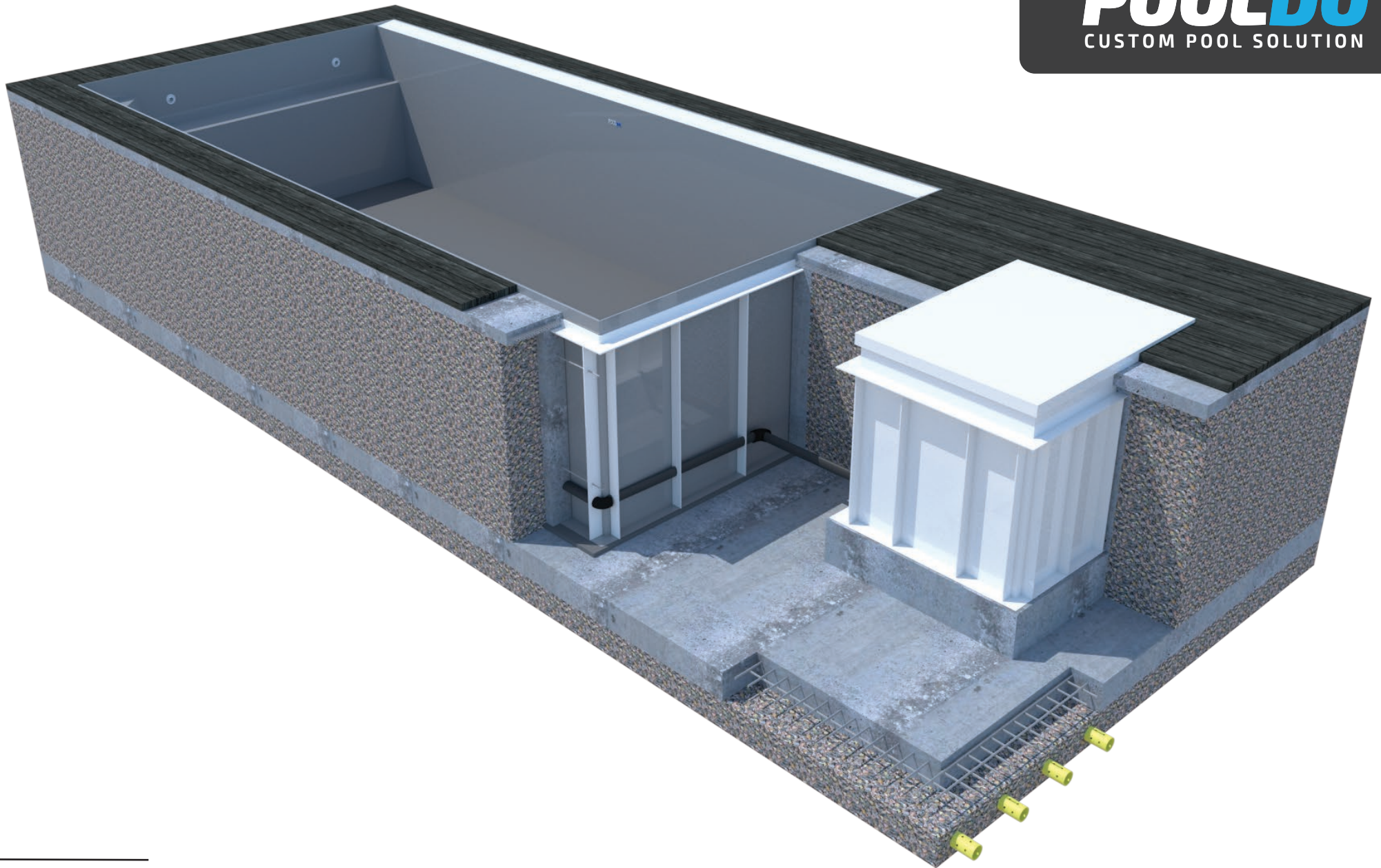


**POOLDO**  
CUSTOM POOL SOLUTION



---

**INFINITY POOLS**  
**INSTALLATION GUIDE**





*Thank you for choosing a pool from PoolDo company. Let's go through step by step how to properly prepare the space for your new pool. To ensure the pool's installation is done correctly please follow every step mentioned in this guide. If you have any questions, please do not hesitate to contact us and we will be happy to help you.*

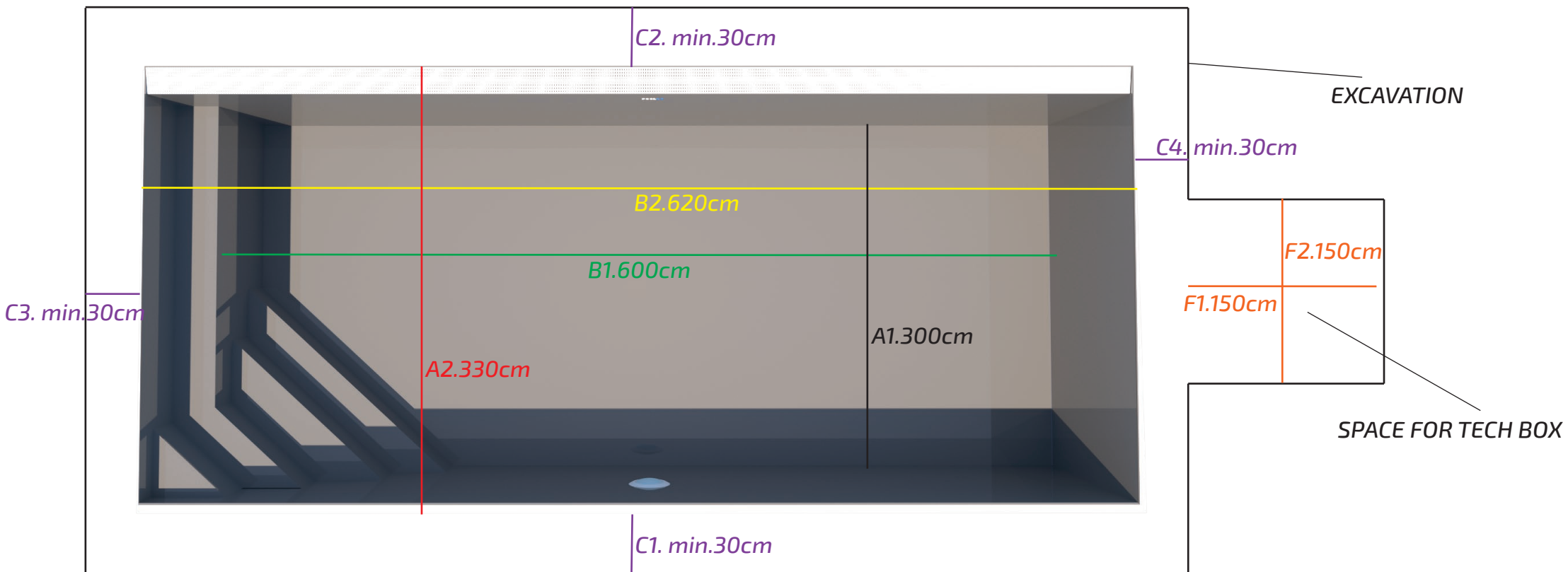
**INFINITY POOL INSTALLATION GUIDE CONTENT**

SIZE AND DEPTH OF THE EXCAVATION .....3-4  
GRAVEL BASE AND DRAINAGE OF THE BASE PLATE .....5  
CONCRETING THE BASE PLATE .....6  
PLACING THE POOL .....7  
POOL PREPARATION FOR CONCRETING .....8  
PREPARING THE ARMATURE ON THE POOL SIDES .....9  
CONCRETING AROUND THE POOL .....10  
FINISHING THE POOL PLATE AROUND THE POOL .....11-12  
FINAL CUT .....13  
NOTES .....14



# INFINITY POOLS INSTALLATION GUIDE

## SIZE AND DEPTH OF EXCAVATION

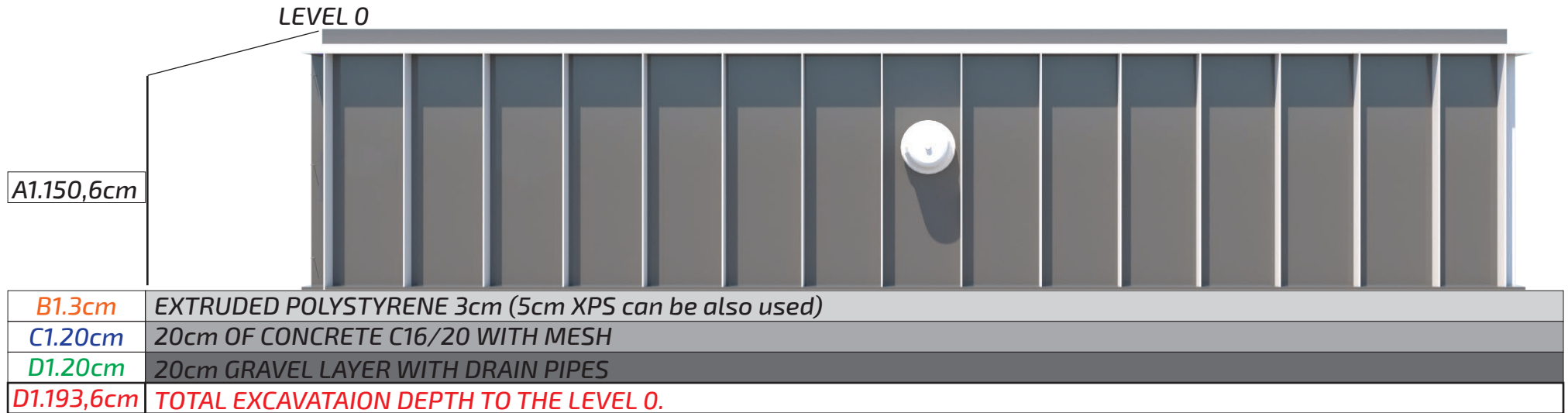


SIZE DESCRIPTION:	SIZE:
A1. INNER WIDTH	300cm
A2. OUTER WIDTH	330cm
B1. INNER LENGTH	600cm
B2. OUTER LENGTH	620cm
C1. + C2 + C3. + C4.	30cm minimum
F1. + F2. TECHNOLOGY BOX 120X120	150x150cm minimum

Here we are showing example of installation of the pool with dimensions of 300x600x150 cm and the filtration box with dimensions of 120x120x120. For the sides C1, C2, C3, C4 it is necessary to add 30 cm for each side. In the middle of the short side there should be a space for technical shaft F1+F2 with minimum size of 150x150x150 cm.

\*In case the swim jet is installed in the box behind the pool, it is necessary to extend the length F1 for at least 180 cm in the direction from the pool.



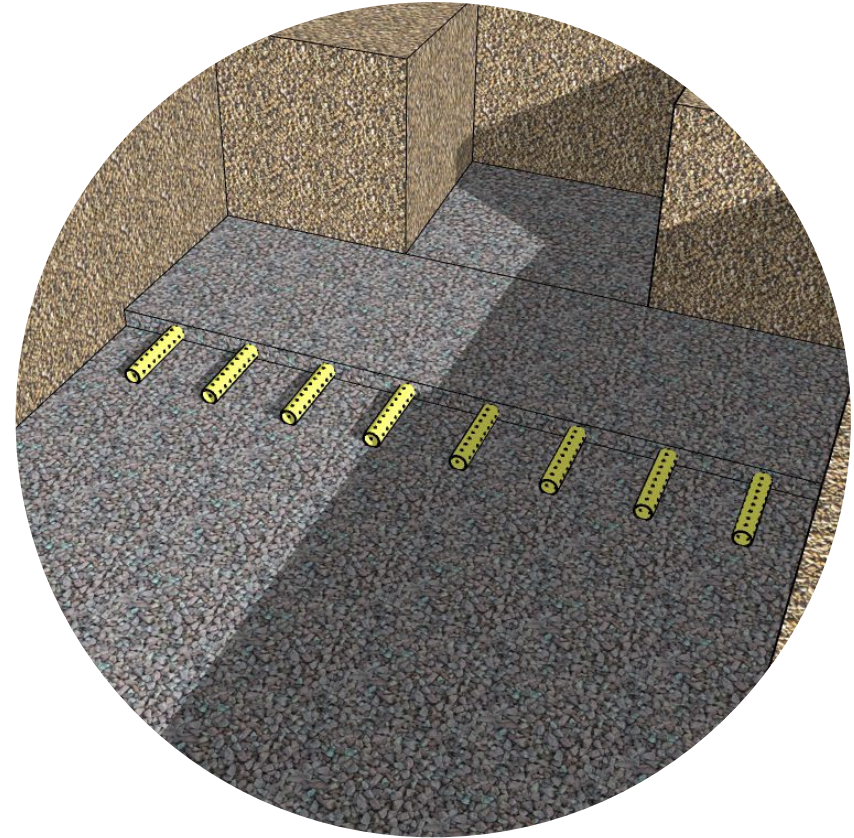
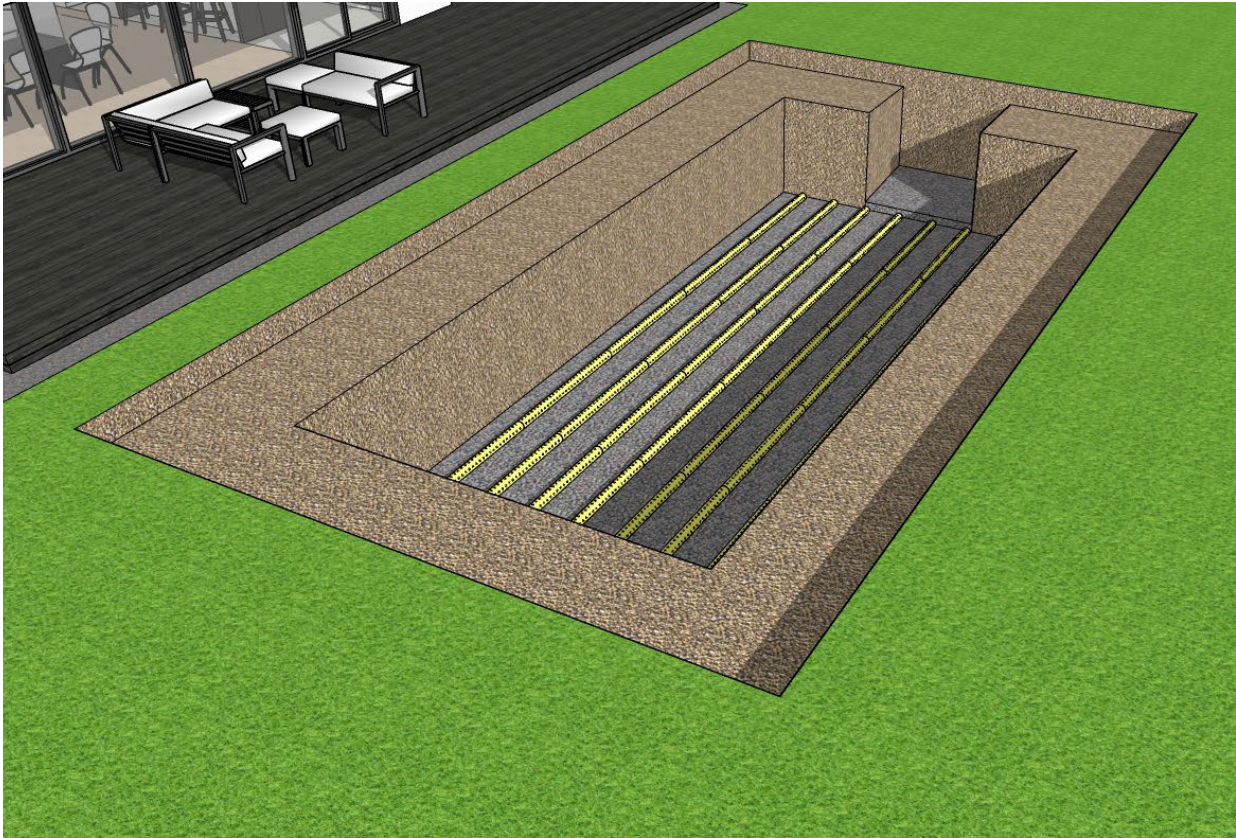


EXCAVATION DEPTH CALCULATION TO LEVEL 0.	SIZE:
INNER DEPTH OF THE POOL	150cm
OUTER DEPTH OF THE POOL (HEIGHT OF THE POOL 150cm + 0,6cm BOTTOM HEIGHT)	150,6cm
OUTER DEPTH OF THE POOL +3cm EXTRUDED POLYSTYREN XPS	153,6cm
OUTER DEPTH OF THE POOL +3cm EXTRUDED POLYSTYREN XPS + 20cm CONCRETE BASE	173,6cm
OUTER DEPTH OF THE POOL +3cm EXTRUDED POLYSTYREN XPS + 20cm CONCRETE BASE + 20cm OF GRAVEL	<b>193,6cm</b>

The depth of the excavation is calculated from the top edge of the pool which is marked as level 0.

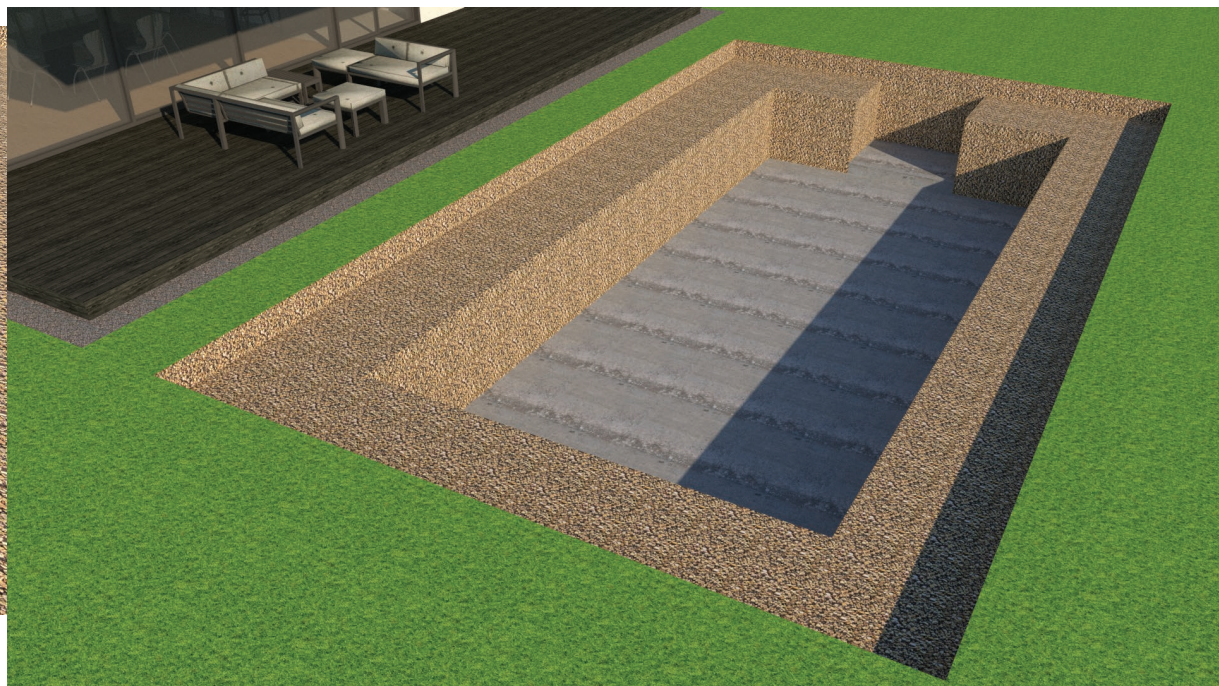
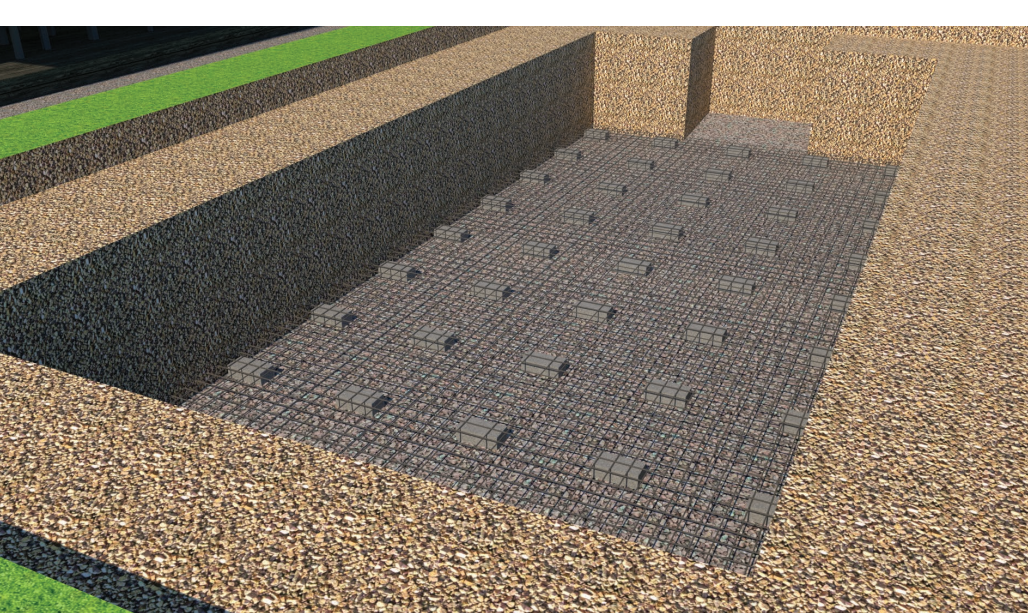
# INFINITY POOLS INSTALLATION GUIDE

## GRAVEL BASE AND DRAINAGE OF THE BASE PLATE



*The gravel bedrock must be at least 20 cm high to prevent movements or drops of the concrete base plate. To the excavation pour about half of the gravel (12cm) fraction 8/16 and really choke with a vibrating plate (the thickness of the gravel base after chocking should be aprox. 10cm.) Then we lay a drainage pipes DN50 about 50-60 cm apart to ensure sufficient drainage under the base plate. Drainage pipes need to be connected to the waste, water drainage or to a shaft with an automatic submersible pump that will drain any groundwater or rainwater. After correct installation of the drainage system, we can completely cover the pipes with the other half of the gravel and carefully choke it again, so that the drainage pipes were not damaged.*



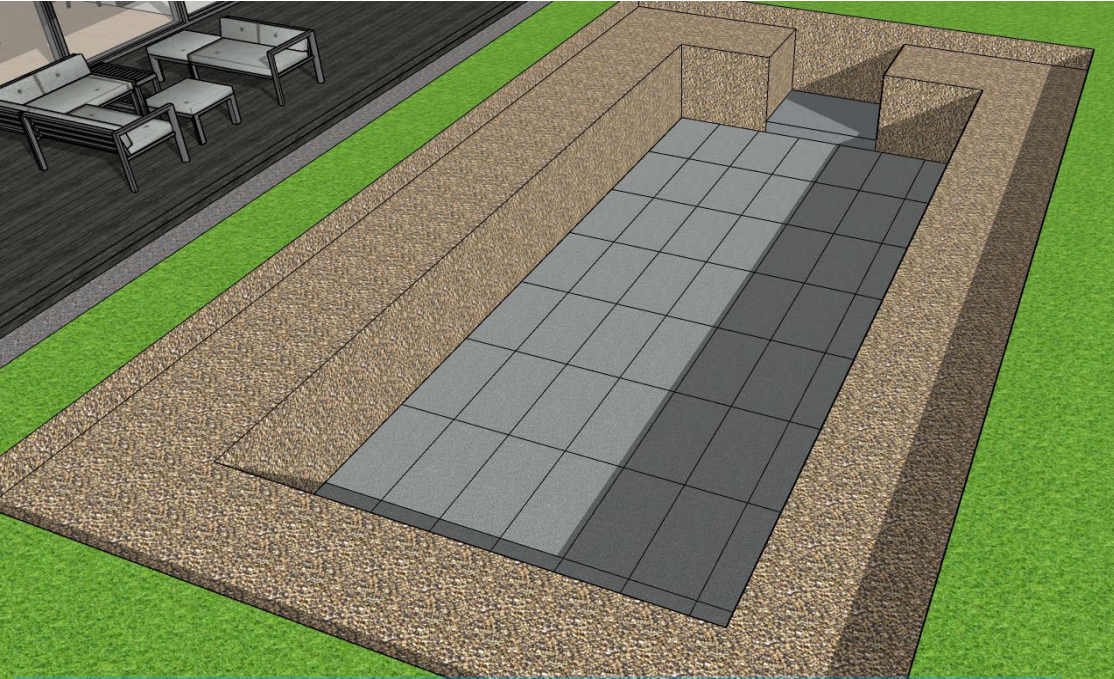


*In the case of an Infinity pool, it is necessary to maintain the flatness of the base plate +/- 2 mm.*

*The base plate must be at least 20 cm high to prevent the pool from moving or sinking. We choose concrete in fraction with smaller aggregate Dmax.8/16mm and strength at least C20/25. Before concreting itself, you need to dig prepare reinforcing nets with a thickness of 6 mm with a maximum mesh size of 10 cm x 10 cm. We will prepare the reinforcing mesh approximately halfway (10 cm) the height of the base plate, we underlay and tie it so that there is no movement of the reinforcement nets. Now we can carry out the concreting itself, only entrust the concreting to a qualified person who has basic concreting skills boards of experience. Carry out concreting carefully in the required quality and in a flatness of +/- 2 mm. In the case of larger inequalities on base plate, unevenness will appear on the surface or during finishing work on the walking areas around the pool. IN in the case of technology installation in the shaft, a 30 cm step must be concreted on the base plate. (See drawing for the shaft.) At Infinity of the pool, it is necessary to observe the flatness of the base plate +/-2mm - if the flatness is not observed, there may be a risk of uneven overflow of the pool. The base plate must be grounded with FeZn 30x4 tape and grounded together with the technological shaft.*



# INFINITY POOLS INSTALLATION GUIDE



Attach 30 mm XPS extruded polystyrene to the base plate with the help of mounting foam or adhesive tape, polystyrene must always be under the whole swimming pool, including the ribbing.

## PLACING THE POOL INTO EXCAVATION

Place the pool into the excavation using a crane with a trained and authorized crane operator, which has experience with manipulation with pools. The pool has special reinforced ribs, for which the pool can be lifted. As a safeguard it is always necessary to use the straps and undercarriage the pool to prevent damage. Never lift and place the pool with wooden spacers that are designed only for transport of the pool and don't serve as lifting points.

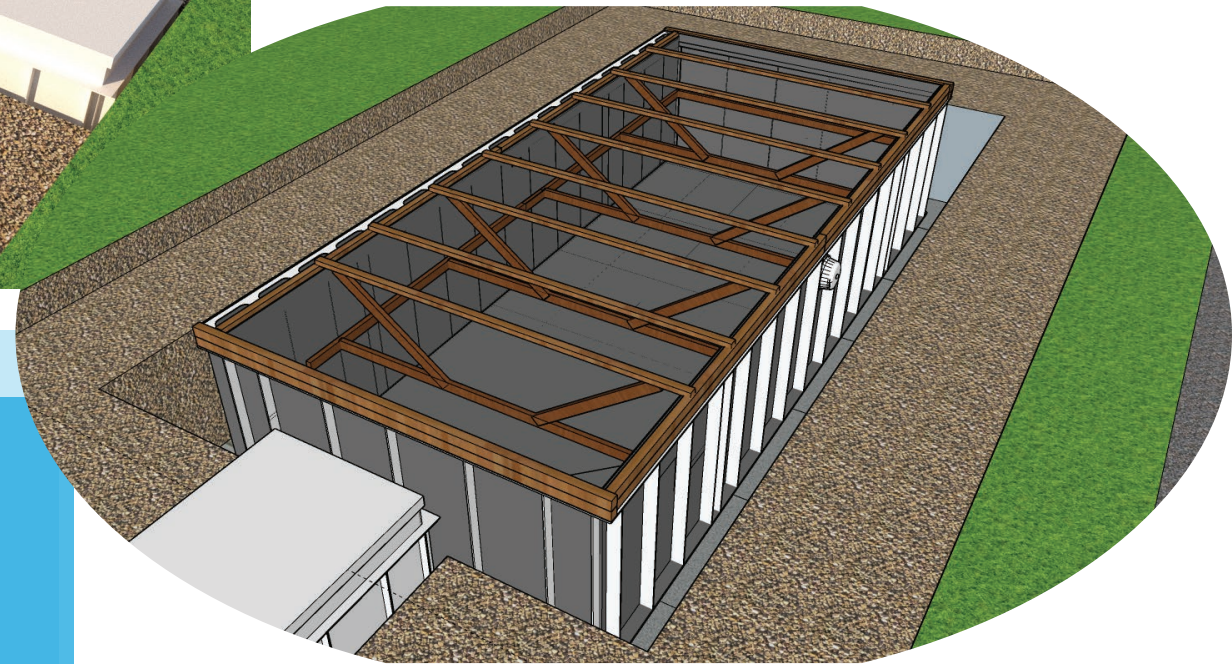
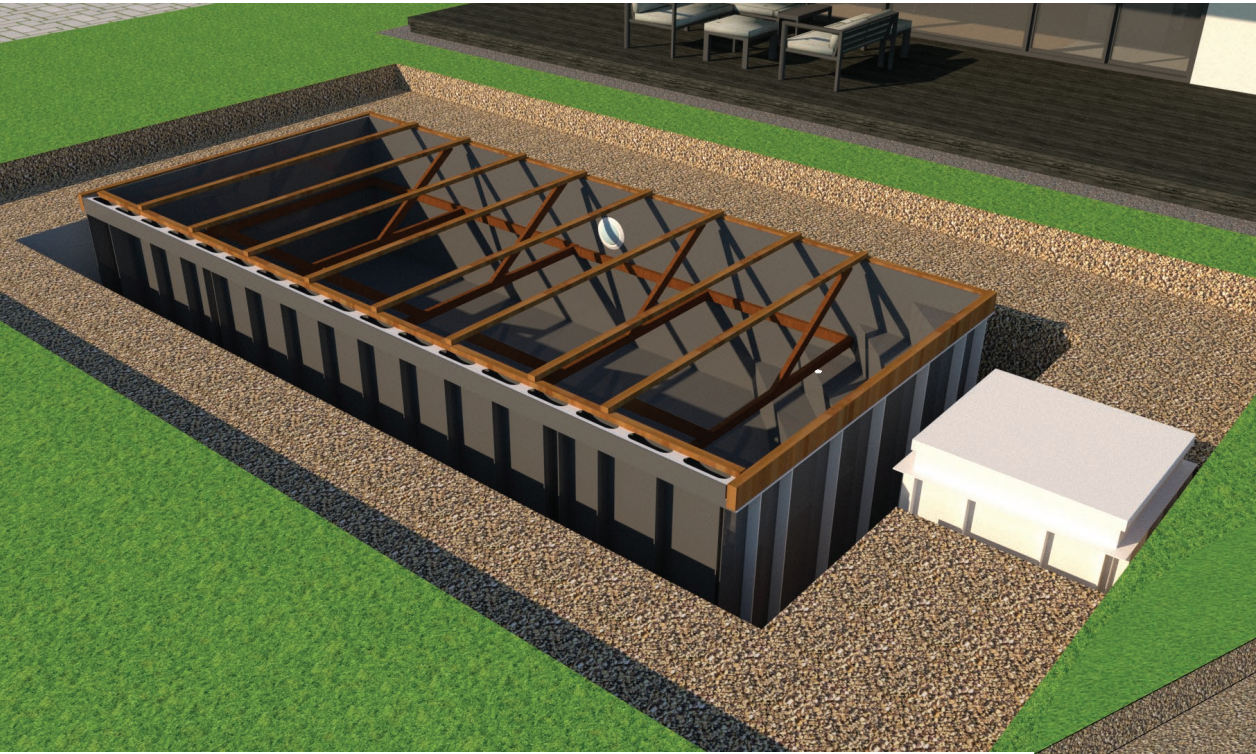


The pool must always be placed using a fully revised technique and stored according to regulations on handling heavy loads. Our company does not provide crane work. (\*Unless stated otherwise.) The company providing the crane work is obliged to use properly revised and compliant facilities and engagements. To store the pool, it is always necessary to request from the company providing pool storage: The so-called quad hook and textile ties (4 pcs - each ideally 4 m.) - corresponding to the weight of the pool, which we will tell you on request.



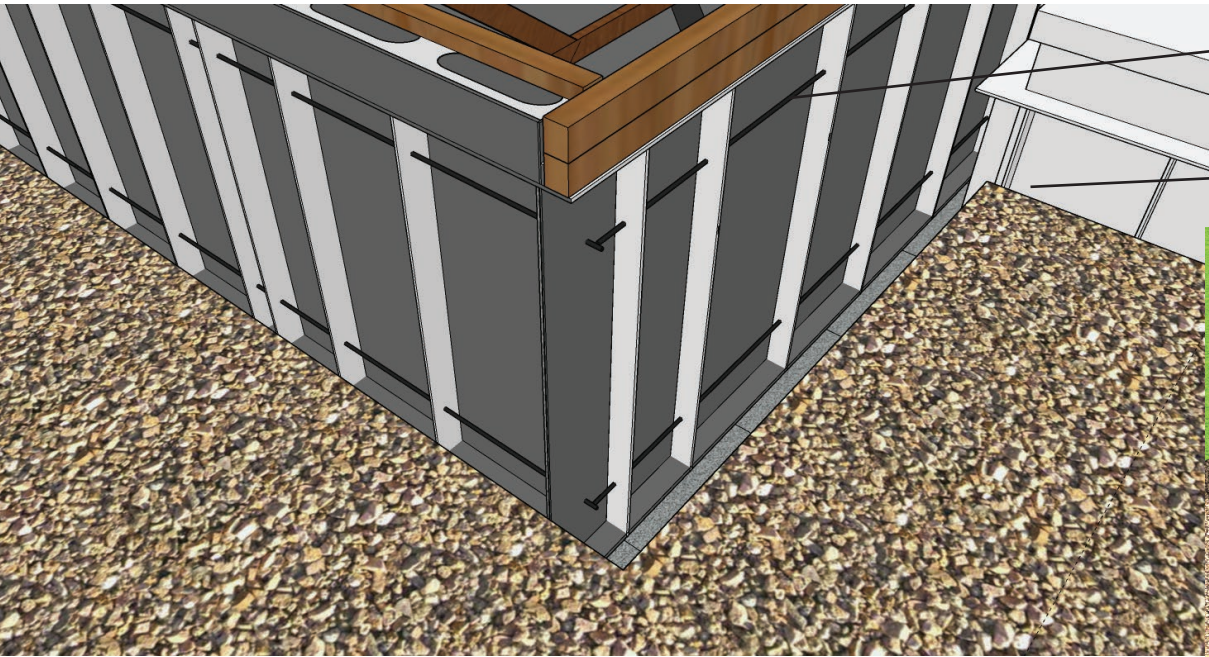
# INFINITY POOLS INSTALLATION GUIDE

## BRACING THE POOL



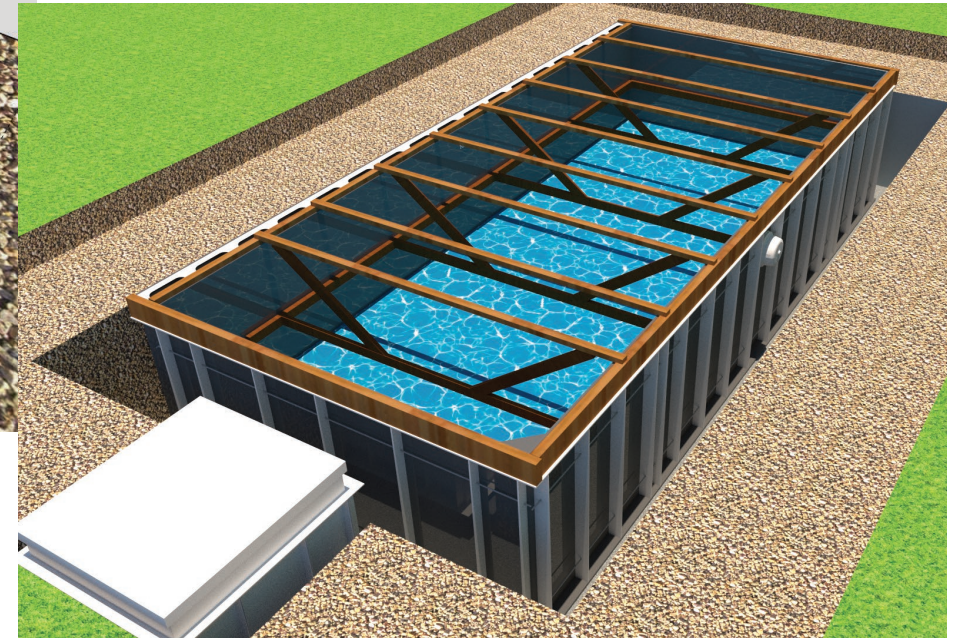
Bracing the pool before concreting is very important step. The bracing must be done exactly according to the drawing, otherwise the skeleton can deform. Before application, we will pack the prepared beams with a size of 60 mmx60 mm in a foam foil or similar material to prevent damage/scratch of the pool walls. The corners of the pool must be free to prevent damage. The beams which are placed on the pool collar must always be at least 5 mm higher than the edge of the pool itself to avoid deformation. (See detail 1.) For inspection please also measure the dimensions, flatness and perpendicularity of the pool according to the supplied drawing.





STEEL ROD

SUPPORTING RIB



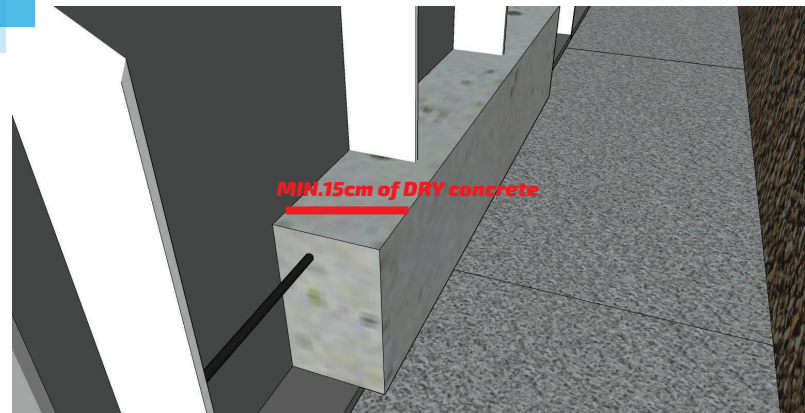
*When the bracing is finished and checked, the pool can be filled with water up to 35-40cm (above the first step). By the time the water fills, the steel rods should be placed through the ribs so that the pool is connected to the surrounding concrete and is sufficiently strengthened. Into each rib pre-drill 2 holes with a size of 8mm: the first 20cm from the top collar and the second one 25cm from the bottom, so that we can pierce the reinforcing wire with a thickness of 6mm. We perform reinforcement around the entire pool in two rows. Now, once again, we check the flatness and perpendicularity of all the walls, making sure that the spread is sufficiently locked and there is no risk of any movement during concreting.*



# INFINITY POOLS INSTALLATION GUIDE

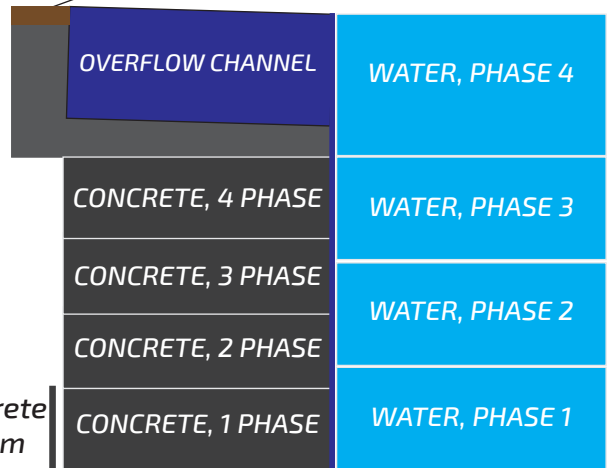
For concreting the pool sides never use the concrete from MIX! Always use only so-called dry concrete of hardness C20 / 25. The concreting takes place in phases - 4x30cm and last 25cm in the case of 5cm paving is planned to be place around the pool. Before each step starts it is necessary to pump more water to the pool so the water level is always 35-40 cm higher than the concrete on the other side of the pool wall. This balances the pressure and ensures flatness. If unevenness is found, it is necessary to stop concreting and secure the flatness by stronger bracing or balancing the pressures to the pool sides. The minimum thickness of concrete is 15cm. On each side of the pool.

## CONCRETING OF THE POOL WALLS



**FOR SIDES WITHOUT THE OVERFLOW CHANNEL USE 15 CM OF CONCRETE**

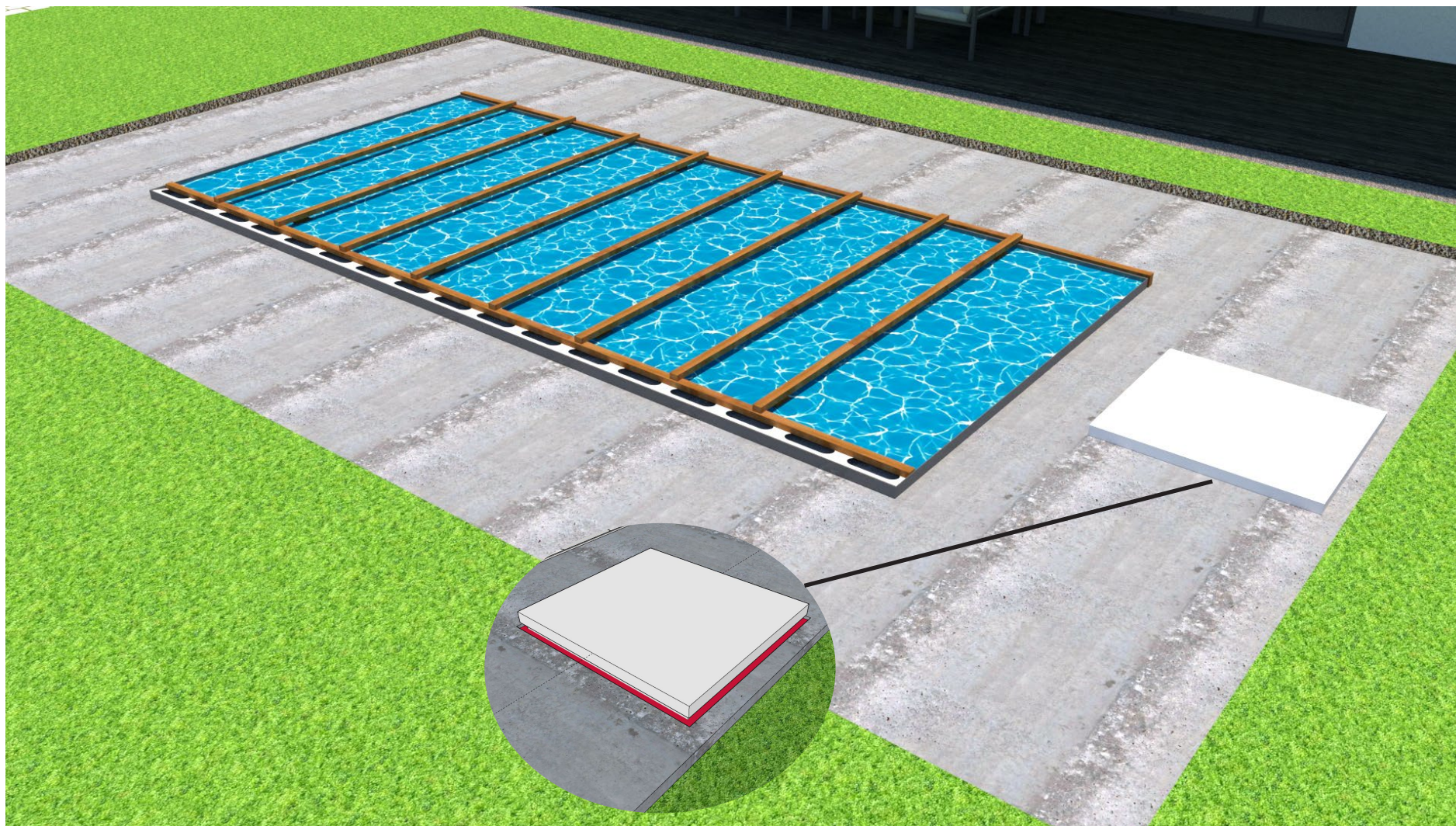
FINAL SURFACE (TILES eg.)



water level 30 - 35cm

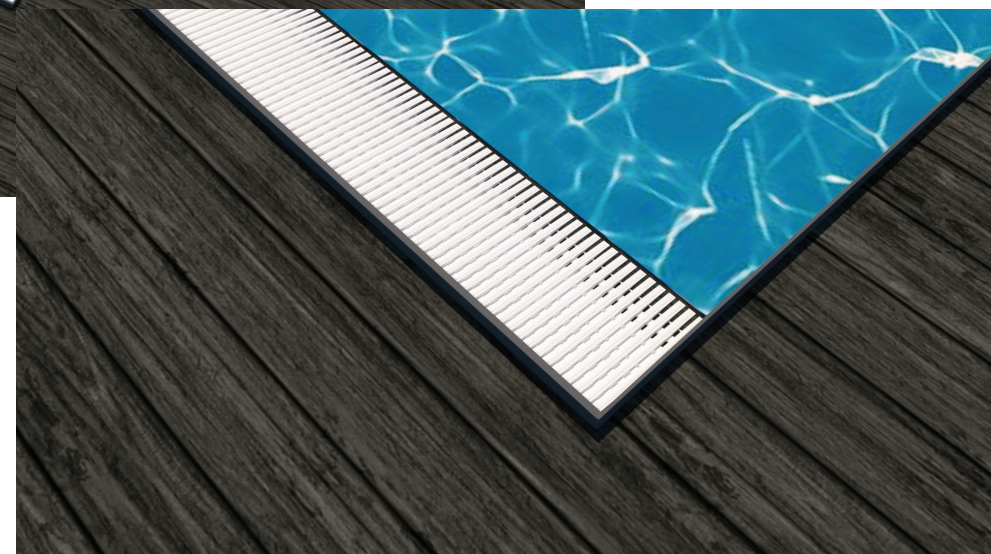
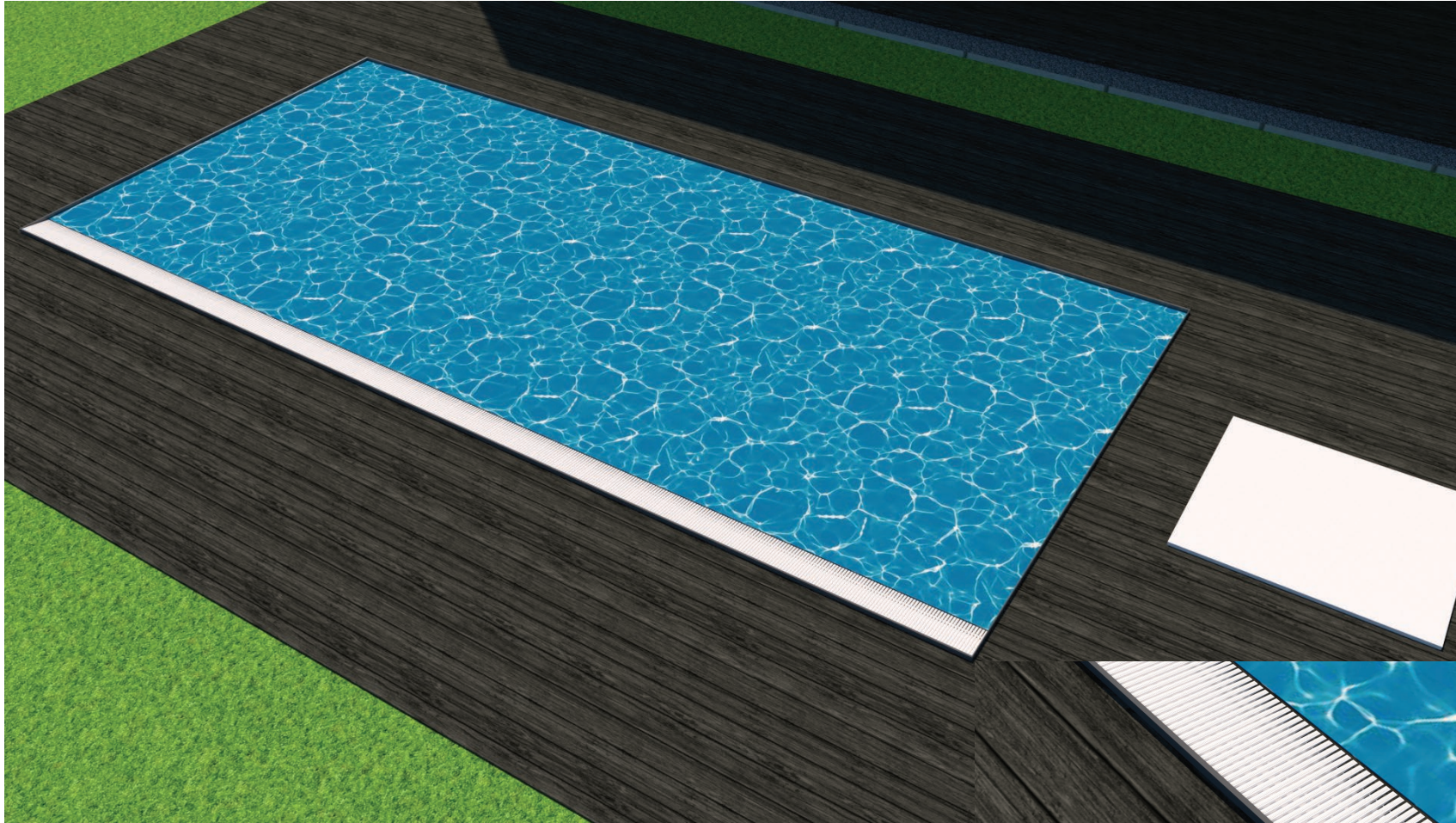
When concreting, it is necessary to pay attention to the pipes around the pool, concrete and other objects must not hit/tear off glued joints. (We recommend to carefully sprinkle the piping at first). During concreting, we recommend to check all joints around the pool and in the tech box.





Concreting the top plate around the pool can be done at once, the overflow channel must be concreted min 30 cm. It is necessary to reinforce the concrete slab around the pool with steel net with meshes of 10x10 cm and at least 5 mm thick. The thickness of the top plate should be at least 15 cm in order to be ready for installation of rails for swimming pool enclosure. We recommend to prepare the drainage channel around the tech shaft so the shaft is not flooded in case of heavy rain.



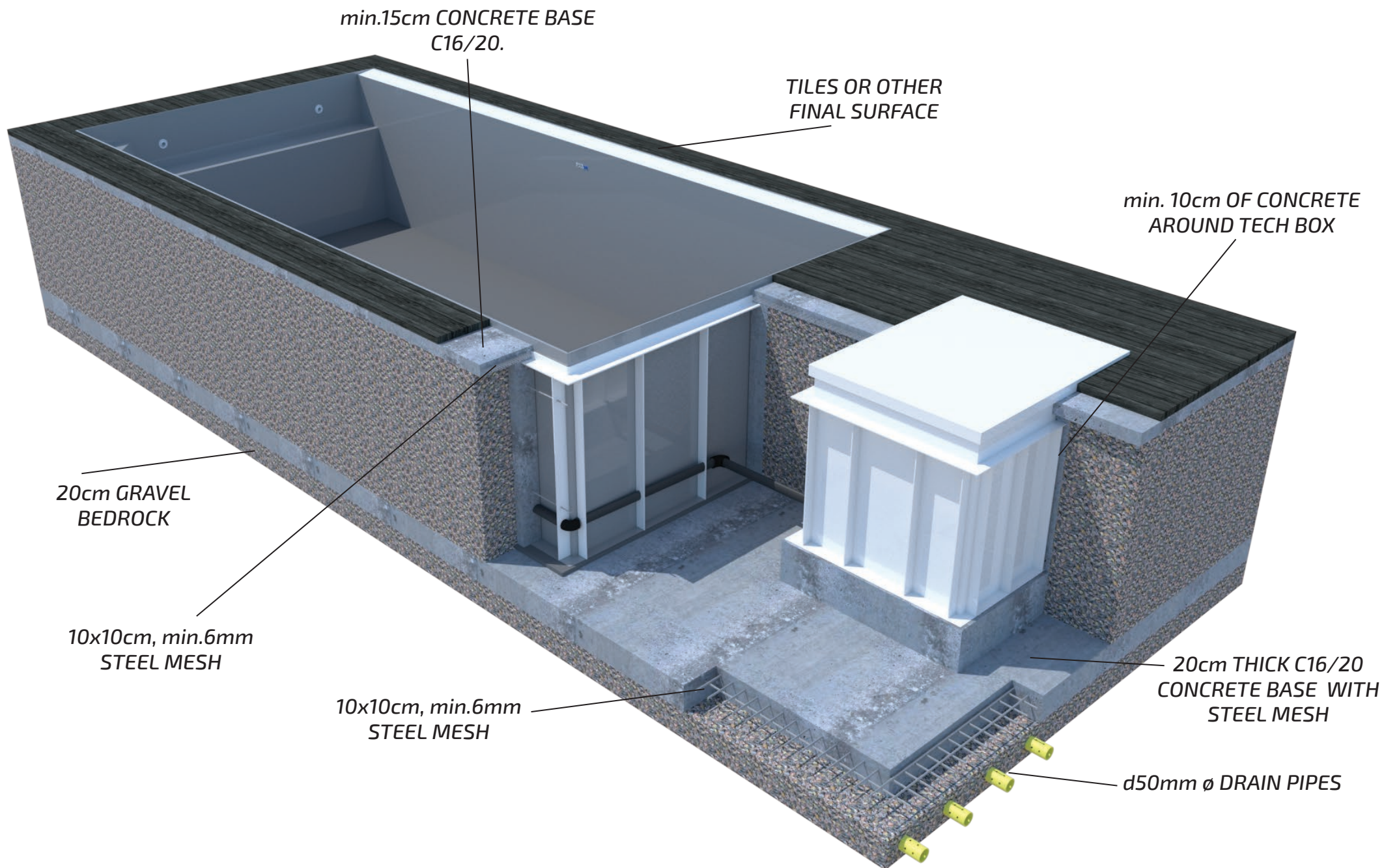


*The final surface finish around the pool.*



# INFINITY POOLS INSTALLATION GUIDE

## FINAL CUT





.....

.....

.....

.....

.....

.....

.....

.....

.....

.....

.....

.....

